

# North-South Segment 2

**Tier 2 Environmental Impact Statement (EIS) and Design  
Concept Report (DCR)**

**Arizona Farms Road to Interstate 10 (I-10)  
(State Route 505)**

Public Scoping Meetings | August 7, 12 & 14 2025

# Meeting Purpose

1

---

Introduce the North-South Segment 2 Study

2

---

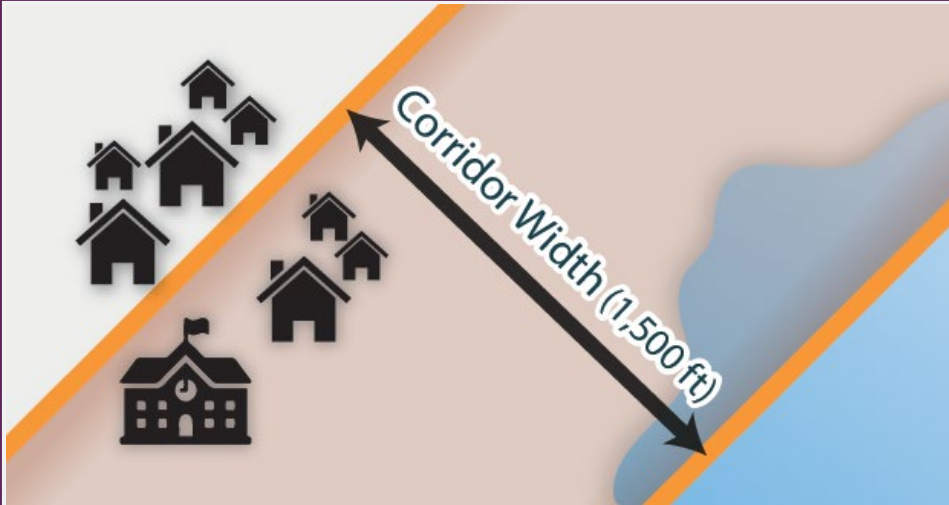
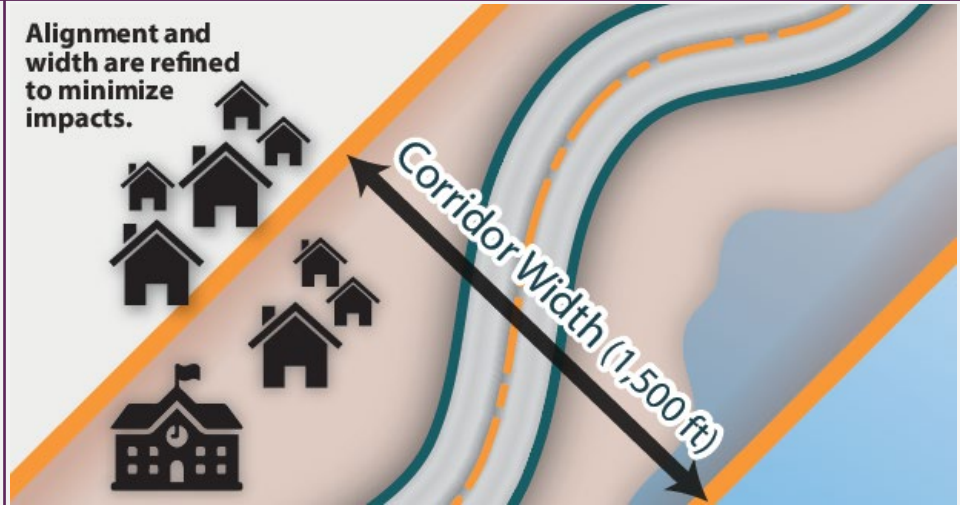
Review the Tier 1 purpose and need and seek public input on the North-South Segment 2 Study area to consider in developing a preliminary range of alternatives



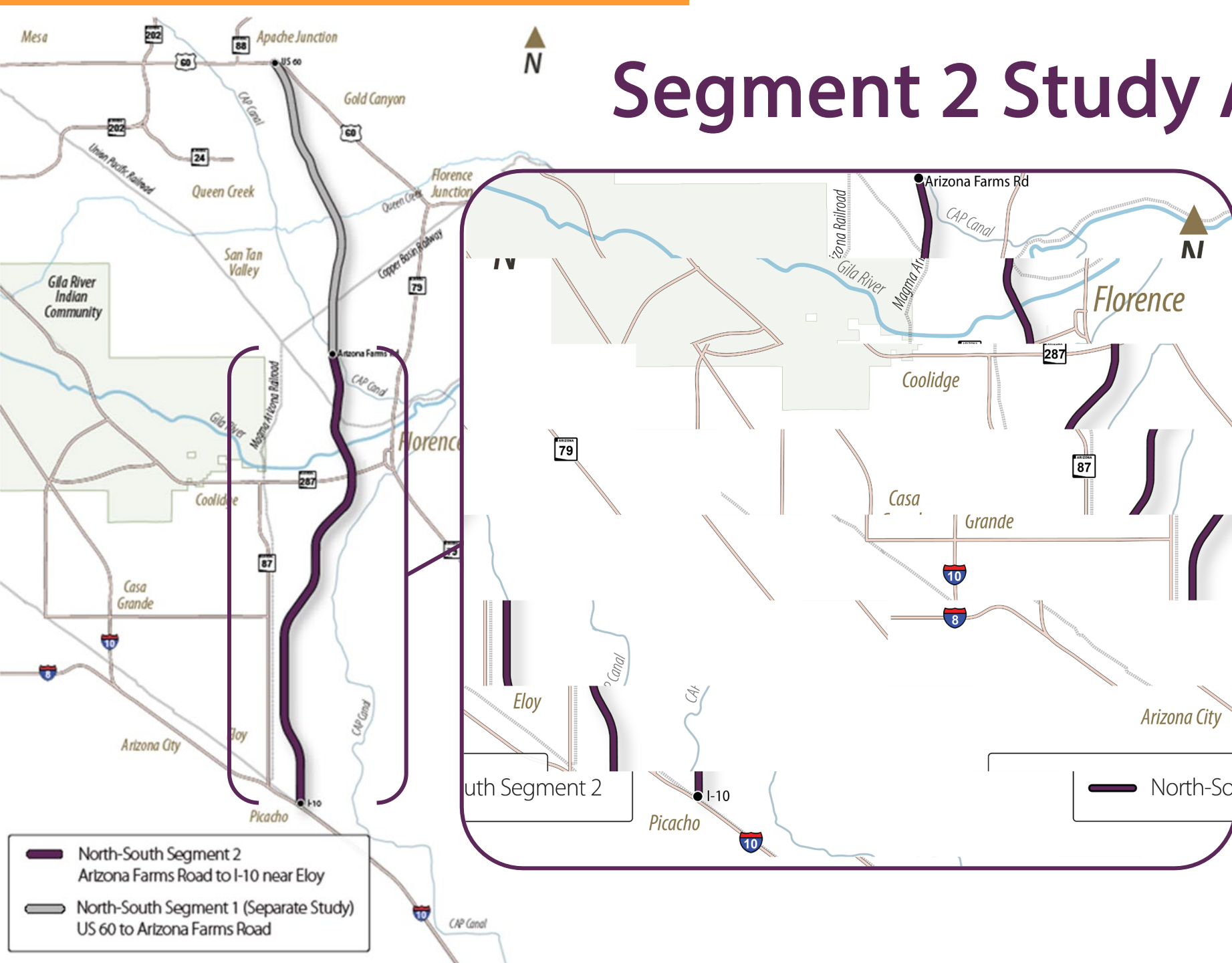
# North-South Corridor Background

- ADOT is studying a more than 50-mile-long north-to-south transportation corridor between US 60 and I-10 in Pinal County
- In 2021 ADOT completed the Tier 1 EIS for the North-South Corridor
- In 2023, ADOT initiated a Tier 2 environmental and engineering study for Segment 1 from US 60 to Arizona Farms Road
- In 2024, ADOT initiated a Tier 2 environmental and engineering study for Segment 2 from I-10 to Arizona Farms Road

# Tier 1 Studies vs Tier 2 Studies

	TIER 1	TIER 2
		
Purpose	Evaluates wide corridors in multiple locations, within a new transportation facility could be located	Evaluates design concepts for specific alignments within the corridor, approximately 400-feet-wide for a typical freeway alignment
Outcome	Select a single corridor (1,500-foot-wide) within which an alignment would be identified during Tier 2 EIS	Select a single alignment and enable permitting for that alignment

# Segment 2 Study Area



- Segment 2 Study extends from Arizona Farms Road to I-10 near Eloy
- Approximately 31 miles long

# Study Goals



Identify alternatives for narrowing the corridor segment, from a 1,500-foot corridor to a proposed 400-foot freeway alignment



Identify proposed interchange locations and develop interchange design concepts



Develop a Tier 2 Environmental Study and DCR



Determine a Preferred Alternative

# Study Purpose and Need

The North-South Corridor Study – Tier 1 Environmental Impact Statement/Design Concept Report identified the following purpose and need for the North-South corridor.

A continuous, access-controlled north-to-south transportation corridor would:

- Improve access to future activity centers
- Improve regional mobility
- Improve north-to-south connectivity
- Integrate the region's transportation network
- Address existing and future population and employment growth
- Provide an alternative to avoid congestion on I-10

The Tier 2 study will further refine and update this purpose and need.

# Tier 2 Environmental Review Process

The National Environmental Policy Act (NEPA) is a Federal regulation that requires:

- Agencies to analyze, disclose, avoid, minimize or mitigate adverse environmental impacts for studies with federal involvement
- Applicable federal agencies to review the proposed project's impacts and mitigation documented during the NEPA process
- Public involvement activities to identify public concerns/controversy and to solicit public feedback on environmental impacts of the proposed project

**A Tier 2 environmental impact statement (EIS), under NEPA, will be prepared to evaluate potential impacts of the proposed project.**



# NEPA Disclosure

*The environmental review, consultation and other actions required by applicable Federal environmental laws for this project are being or have been carried out by ADOT pursuant to 23 U.S.C. 327 and a Memorandum of Understanding dated 6/25/2024 and executed by the Federal Highway Administration and ADOT.*

# Tier 2 Engineering Considerations

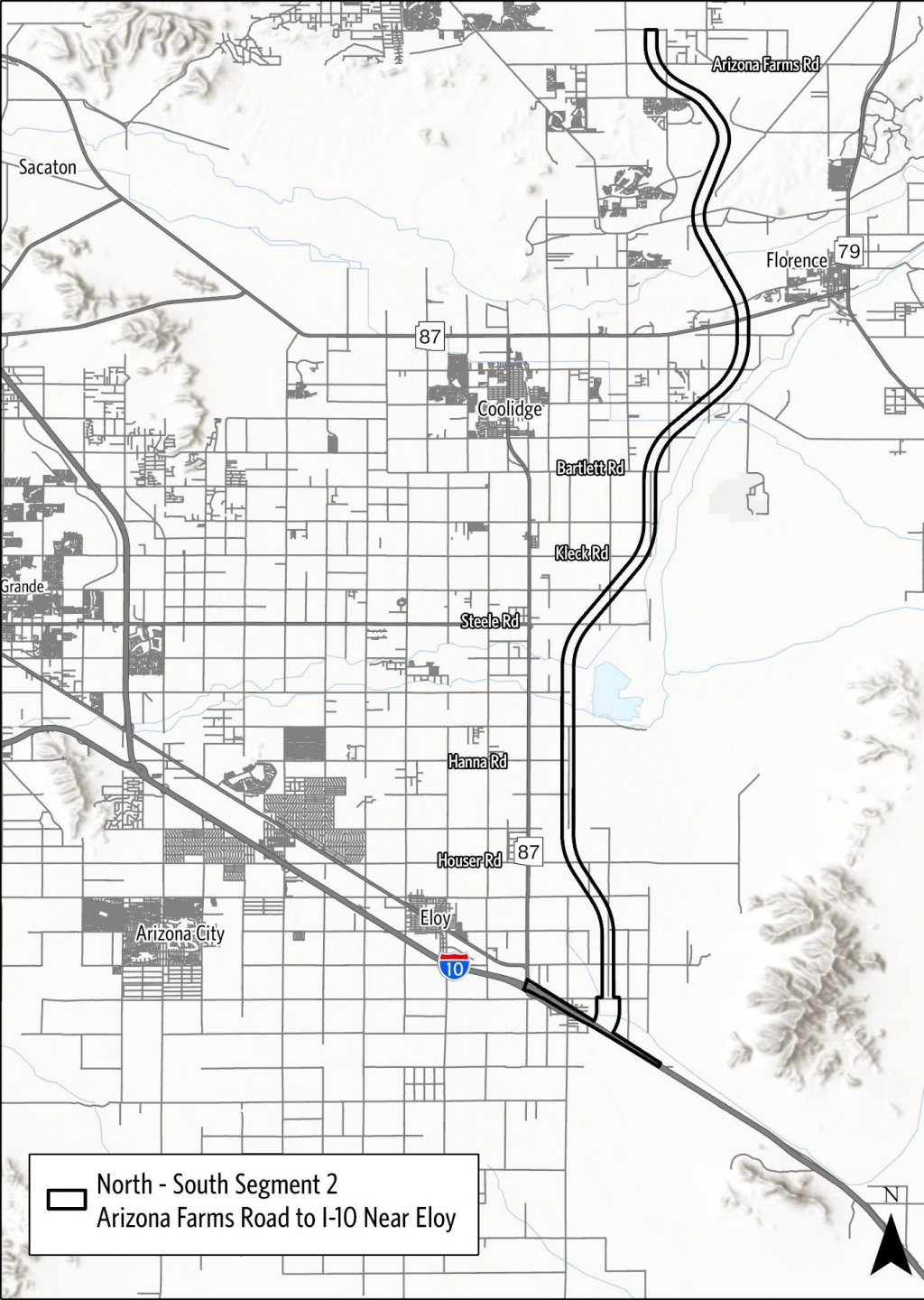
This study will focus on the 1,500-foot selected corridor and considerations may include:

- Existing and Future Traffic Analysis
  - Includes build and no-build analysis
- Utilities and Railroads
- Geotechnical
- Drainage and Floodplains
- Potential Interchange Locations
- Access
- Terrain/Topography
- Development of Roadway Alternatives (400-foot)
- Design Concept Report

# Tier 2 Environmental Considerations

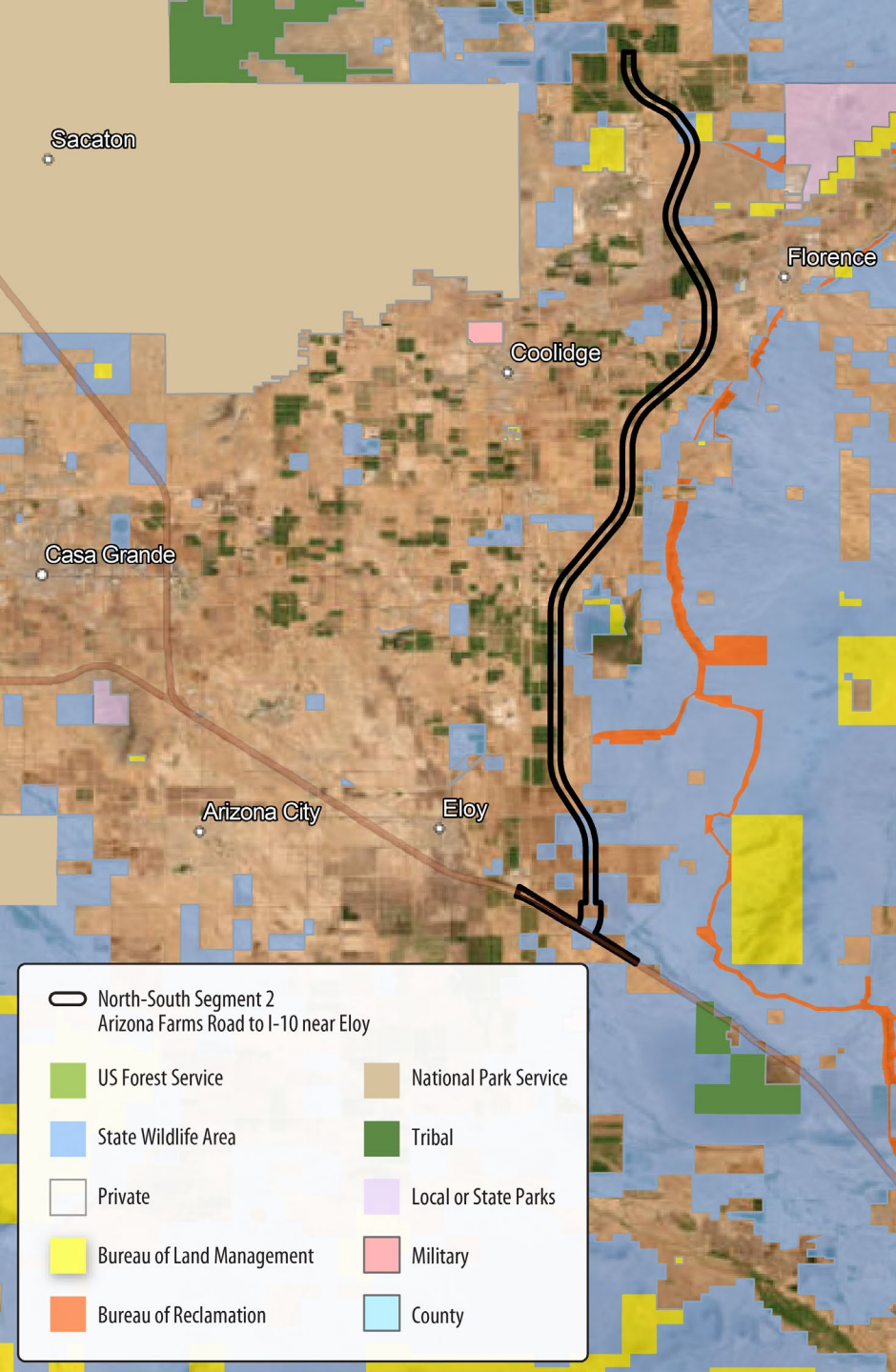
This study will focus on the 1,500-foot selected corridor and considerations may include:

- Purpose and Need
- Cultural Resources
- Section 4(f)
- Wildlife Connectivity
- Biology
- Noise
- Air Quality
- Property Impacts
- Visual Conditions
- Hazardous Materials
- Land Use/Local Planning
- Socioeconomic Impacts
- Geology
- Floodplains/Drainage
- Water Quality/Resources



# Corridor Features

- Railroads
- Canals
- Gila River
- Numerous communities
- Picacho Reservoir
- Highways including:
  - I-10
  - SR 87
  - SR 287
  - SR 79
- Local roadways including:
  - Arizona Farms Road
  - Hunt Highway
  - Attaway Road



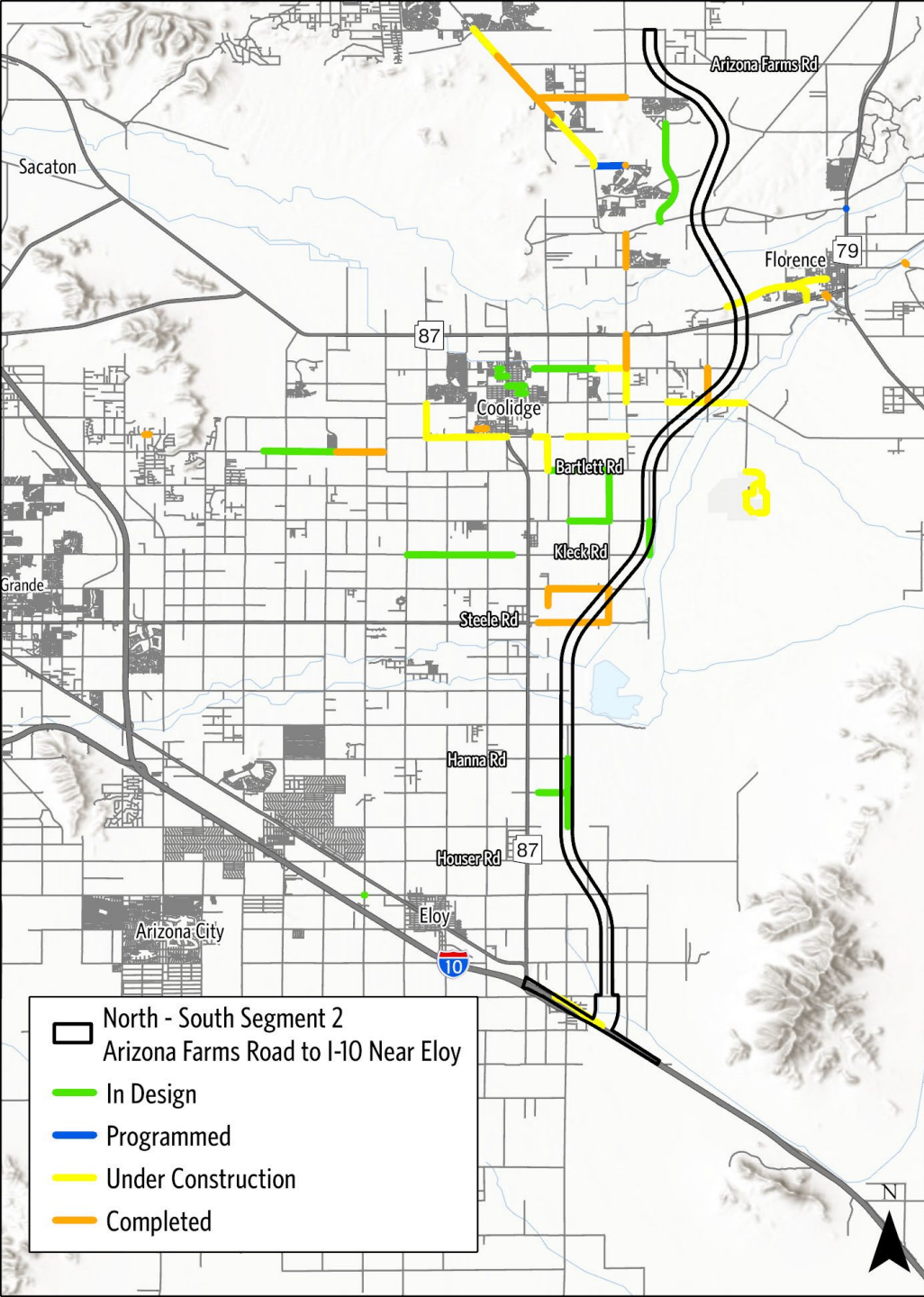
# Corridor Features

- Primarily privately owned and State Trust land
- Includes scattered residences and master-planned communities
- Solar energy facilities
- Utility corridors
- Agricultural lands
- Commercial and manufacturing sites
- Mining



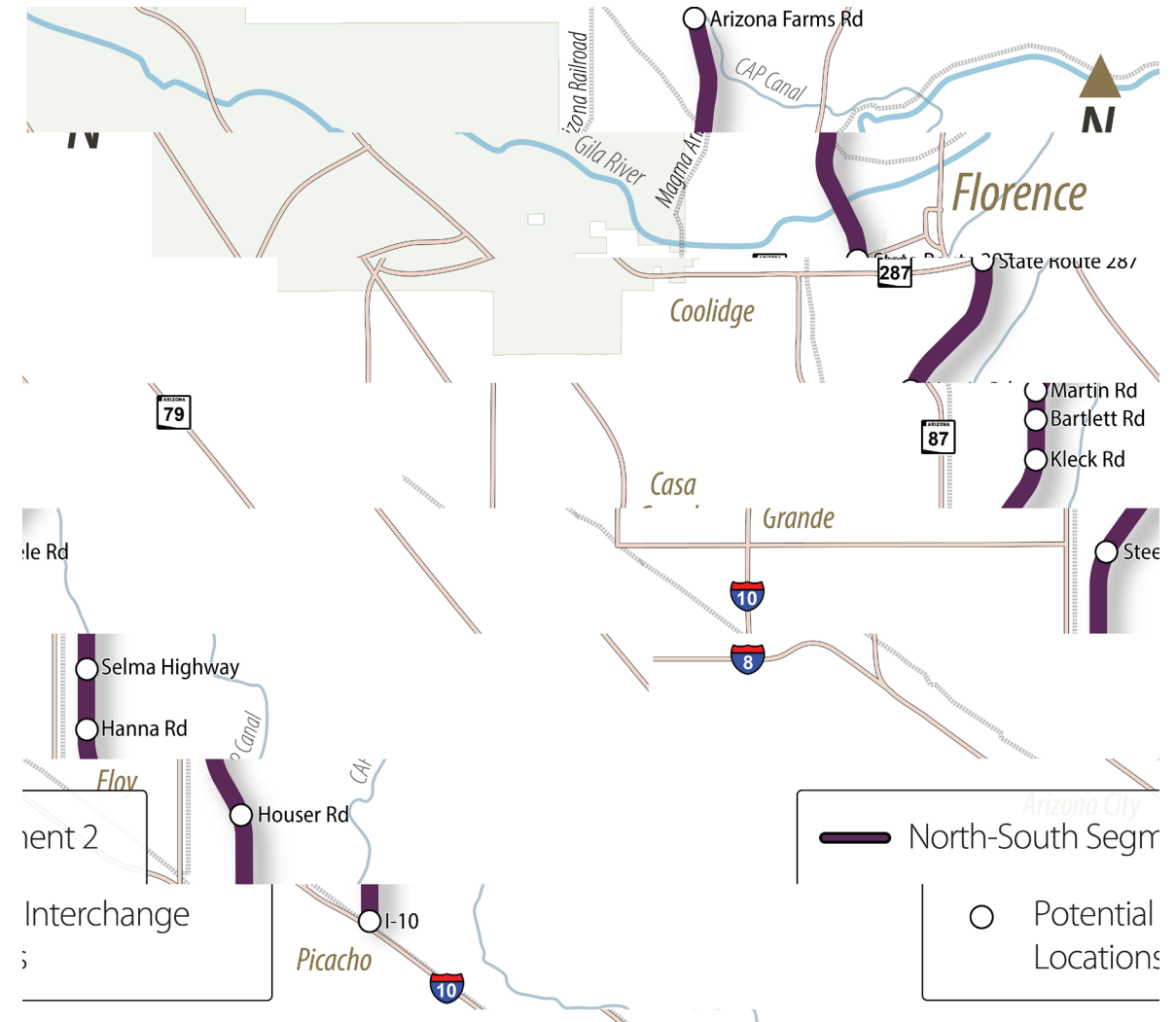
# Corridor Features

- Existing and future arterial street network



# Potential Traffic Interchanges

- Interchange locations and design concepts will be identified as a part of this study
- The North-South Corridor Study – Tier 1 EIS/DCR listed the following potential interchange locations based on the future roadway network:
  - Arizona Farms Road
  - State Route 287
  - Martin Road
  - Bartlett Road
  - Kleck Road
  - Steele Road
  - Selma Highway
  - Hanna Road
  - Houser Road
  - Interstate 10



# Community Concerns Expressed in the Tier 1 Study



Ensuring coordination with recent and ongoing studies in the area



Utility and railroad impacts



Noise impacts



Impacts on existing and planned surrounding communities and individual property owners



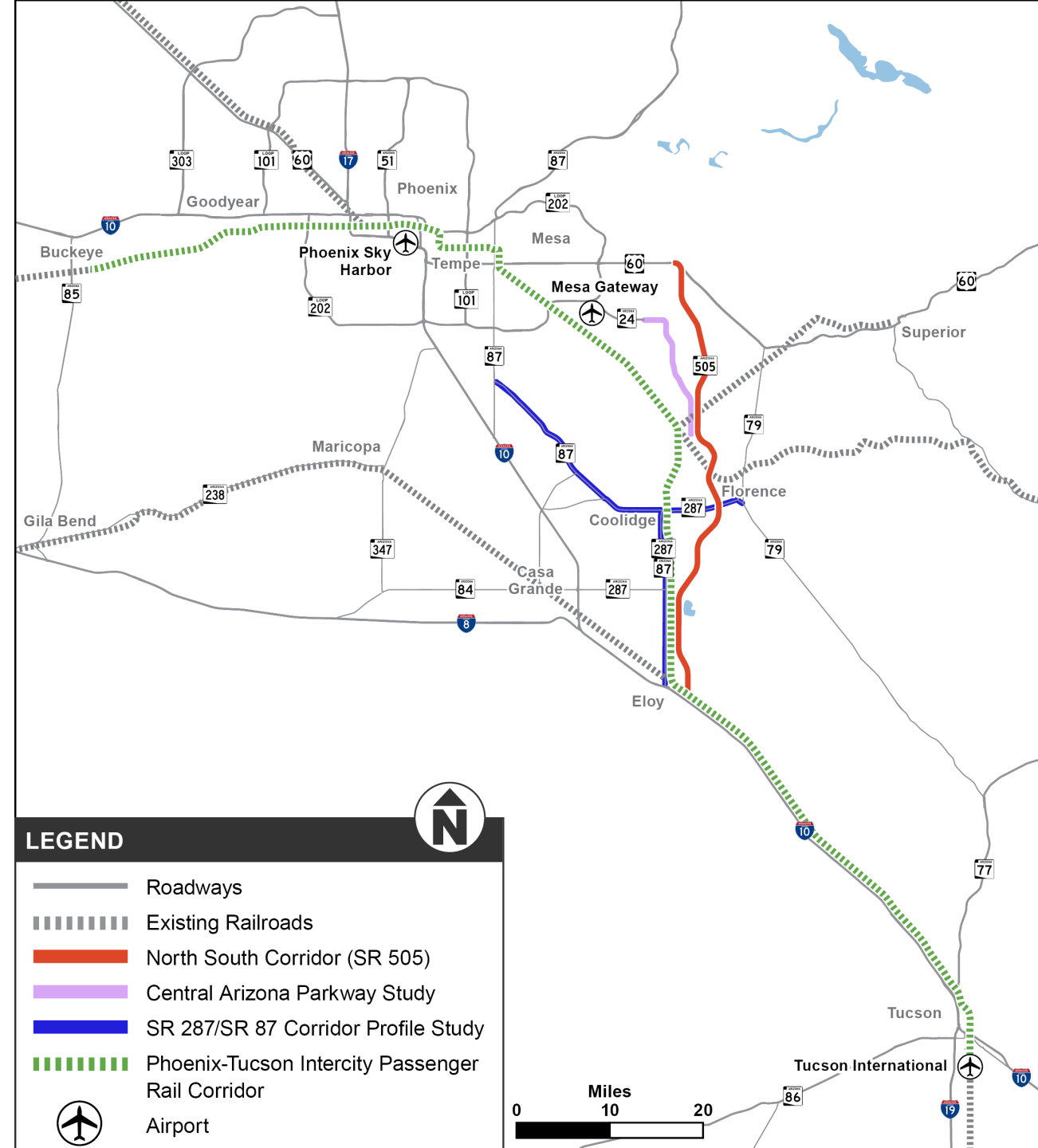
Potential impacts to cultural resources, natural and biological resources and water resources.



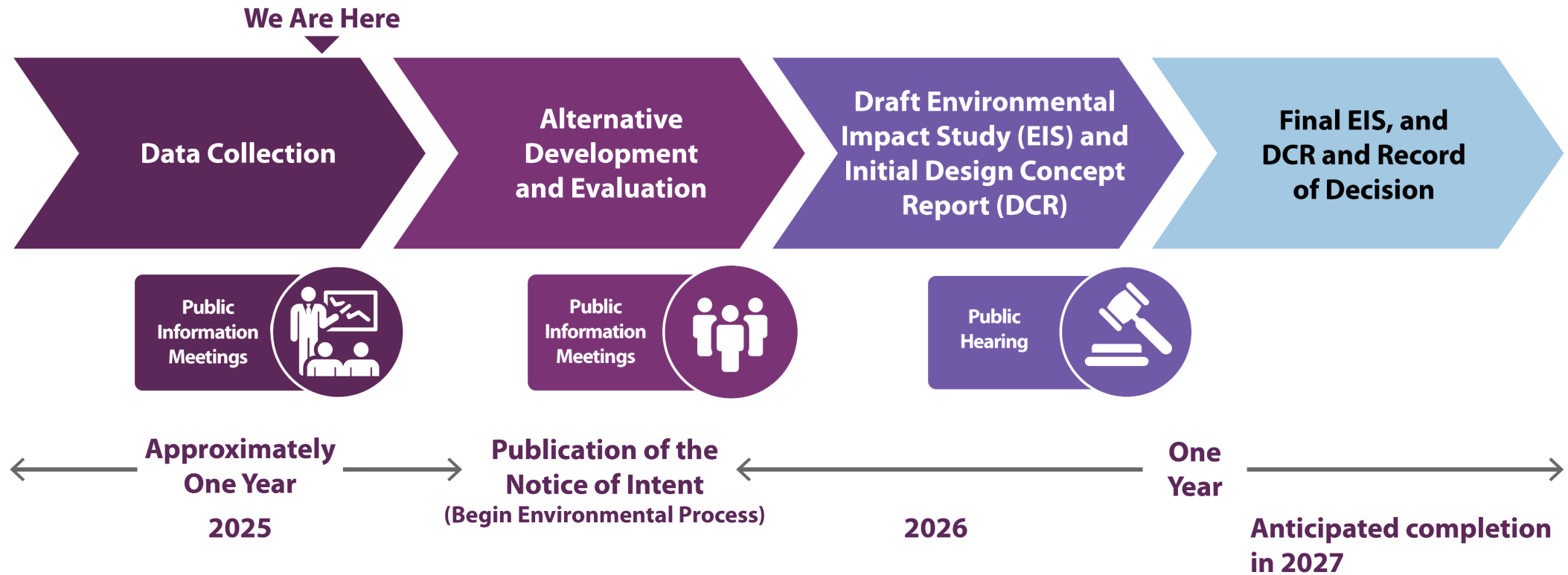
# Other Studies

## ADOT

- North-South Segment 1 Study
- Phoenix-Tucson Intercity Passenger Rail Corridor Study
- SR 287/87 Corridor Profile Planning Study



# Study Schedule



# Project Status



No timeline to construct the North-South corridor, since it is not currently funded for design or construction



Funding must be identified to issue a Record of Decision for a North-South Build Alternative in order to advance the project design and/or right of way acquisition



Regional transportation planning organizations such as the Maricopa Association of Governments, the Sun Corridor Metropolitan Planning Organization and Pinal County will coordinate with ADOT on design, right-of-way acquisition and construction once funding is available

# What We Need From You!

- Comments will be used to help develop a range of potential alternatives (alignments)
- What should you share?
  - The Tier 1 study was finalized in Aug. 2021, has anything changed since then?
  - What should we consider when developing preliminary alternatives?
  - Do you have any major concerns? What are they?
  - Are there key destinations in the area that need better access?
  - Is there anything that should be considered for the development of the Tier 2 purpose and need?

# How to Comment

We encourage you to provide input on the current phase of the study through September 8, 2025, in any of the following ways:



Attend one of our public meetings  
(in-person or virtual)



Online comments: [www.northsouth-segment2.com](http://www.northsouth-segment2.com)



Email: [info@northsouth-segment2.com](mailto:info@northsouth-segment2.com)



Call: 602-952-5700



Mail: ADOT North-South Segment 2 c/o HDR, Inc.  
20 E. Thomas Rd., Suite 2500  
Phoenix, AZ 85012